

## PRO-DIP™ CYP 20 %



THE VERSATILE SHEEP AND CATTLE DIP



CYPERMETHRIN 20 % m/v

PLUNGE DIP



SPRAY RACE



FRESH FILL /  
REPLENISH

1 L  
TO  
1000 L  
WATER

FRESH FILL

1 L  
TO  
1000 L  
WATER

REPLENISH

1 L  
TO  
800 L  
WATER

### CATTLE

TICKS  
NUISANCE FLIES  
BITING FLIES  
BITING LICE  
SUCKING LICE

### SHEEP

KAROO PARALYSIS TICKS  
SHEEP SCAB MITE  
BLOW FLY STRIKE up to 4 weeks

## USE IN COMBINATION

FOR POWERFUL COMPREHENSIVE  
PARASITE CONTROL

see overleaf for  
mixing instructions

## AMIDIP® MAX



THE VERSATILE CATTLE DIP



AMITRAZ 25 % m/v

PLUNGE DIP



SPRAY RACE



FRESH FILL /  
REPLENISH

1 L  
TO  
5000 L  
WATER

FRESH FILL

1 L  
TO  
1000 L  
WATER

### CATTLE

SINGLE-HOST TICKS  
MULTI-HOST TICKS  
LICE  
MANGE MITES

## AMIDIP® MAX | PRO-DIP™ CYP 20 %

USE IN COMBINATION

FOR POWERFUL COMPREHENSIVE PARASITE CONTROL

### CATTLE

SINGLE-HOST TICKS  
MULTI-HOST TICKS  
LICE  
MANGE MITES  
NUISANCE FLIES  
BITING FLIES

SPRAY RACE



Each product must be mixed  
with 20 litres of clean water  
**separately** prior to being  
included into the dip sump / tank

1 L  
AMIDIP®  
MAX

+ 1 L  
PRO-DIP™  
CYP 20 %

WITH  
2000 L  
WATER

## AMIPOR®



THE FIRST COMBINATION POUR-ON

FOR COMPREHENSIVE ECTOPARASITE CONTROL



AMITRAZ 1 % m/v

CYPERMETHRIN 1 % m/v

PIPERONYL BUTOXIDE 5 % m/v

POUR-ON



### CATTLE

TICKS  
HOUSE FLIES  
STABLE FLIES  
FACE FLIES  
BITING LICE  
SUCKING LICE

5 ml  
PER  
50 kg

### SHEEP

KAROO  
PARALYSIS  
TICKS

2 ml  
PER  
10 kg

### RED LICE

4 ml  
PER  
10 kg

### GOATS

RED LICE

4 ml  
PER  
10 kg

### GAME

TICKS

5 ml  
PER  
50 kg

AMIPOR® – Reg. No. G2058 (Act 36/1947), Namibia Reg. No. V06/19.3.9/75 [NSO] Botswana Reg. No. W130656 – Contains: Amitraz 1 % m/v, Cypermethrin 1 % m/v and Piperonyl Butoxide 5 % m/v. ELIMINATE – Reg. No. G3348 (Act 36/1947), Namibia Reg. No. V09/18.1.2/77 [NSO] Botswana Reg. No. W130659 – Contains: Abamectin 0.5 % m/v. VIRBAMEC® LA – Reg. No. G2885 (Act 36/1947), Namibia Reg. No. V01/18.1.2/09 [NSO] Contains: Ivermectin 1 % m/v. PRO-DIP® CYP 20 % – Reg. No. G2311 (Act 36/1947), Namibia Reg. No. V04/18.3.4/119 [NSO] Botswana Reg. No. W130658 – Contains: Cypermethrin 20 % m/v. AMIDIP® MAX – Reg. No. G3767 (Act 36/1947), Namibia Reg. No. V08/18.3.4/131 [NSO] Botswana Reg. No. W130660 – Contains: Amitraz 25 % m/v.

DOWNLOAD  
THE APP

Google play

Download on the  
App Store

www.virbac.co.za

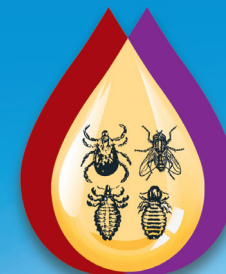
Virbac (Pty) Ltd (Reg. No. 1990/003743/07)  
Private Bag X115, Halfway House 1685, South Africa  
Tel: (012) 657-6000 Fax: (012) 657-6067



Shaping the future of animal health

## THE VIRBAC SOLUTION

... for comprehensive  
ectoparasite control



Virbac

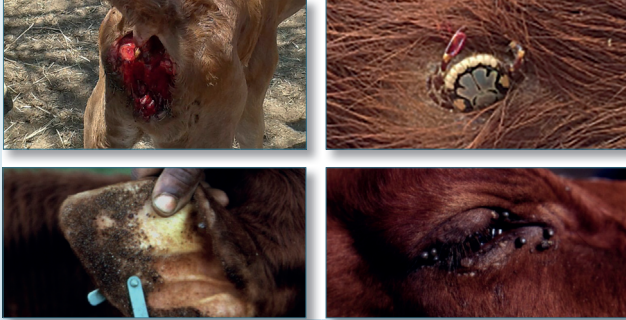
Shaping the future of animal health

# ECONOMIC IMPACT OF TICKS

Ticks are the most economically important external parasite of livestock

Heavy tick infestations lead to...

## MECHANICAL DAMAGE



## TRANSMISSION OF DISEASE



## PRODUCTION LOSSES

22 engorging Bont ticks on cow per day over a 90 day period leads to

20 kg weight loss

11 kg weight loss

# THE VIRBAC SOLUTION FOR TICK CONTROL



## CONTROL OF ONE-HOST TICKS

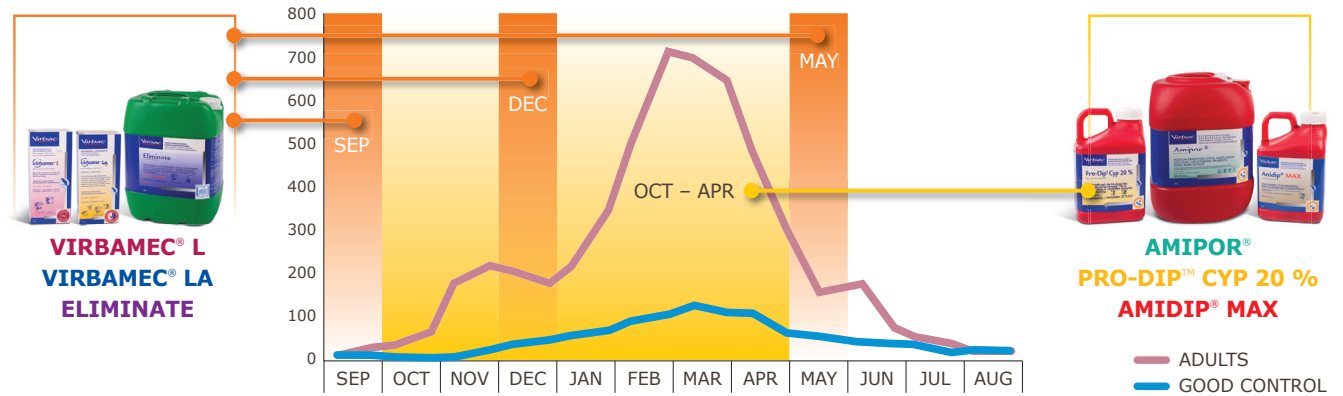
Treat animals in **early spring** to reduce larvae and nymphs

Follow up with a contact dip when endectocides are used

With high tick challenges or when animals are moved to rested camps

- Dip animals 1 x week for 3 weeks / Dip according to the 5, 5, 4 day dip strategy
- Always use contact dips containing **amitraz**  
AMIPOR® | AMIDIP® MAX / PRO-DIP™ CYP 20 % combo

### THE VIRBAC TREATMENT STRATEGY FOR ONE-HOST TICK CONTROL



## CONTROL OF MULTI-HOST TICKS

Dip animals in **winter** to reduce immature stages

Dip animals in **summer** to reduce adult stages

Spot treatments can be done frequently

With high tick challenges or when animals are moved to rested camps

- 5, 5, 4 day dip strategy
- Always use contact dips containing **amitraz**  
AMIPOR® | AMIDIP® MAX / PRO-DIP™ CYP 20 % combo

### THE VIRBAC TREATMENT STRATEGY FOR MULTI-HOST TICK CONTROL

