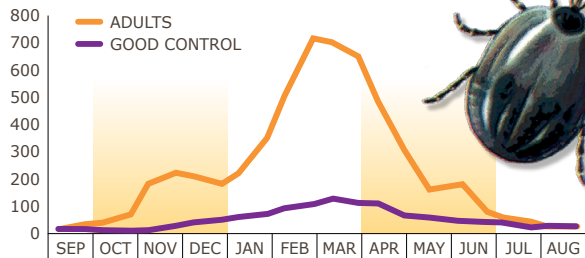


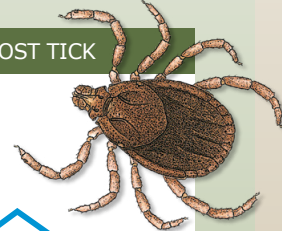
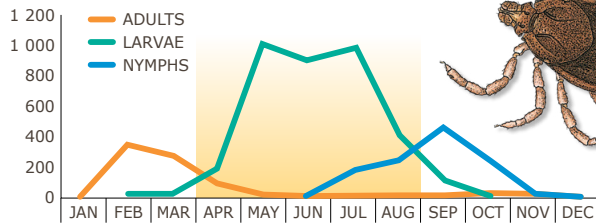
## CONTROL STRATEGY FOR EXTERNAL PARASITE CONTROL

**ELIMINATE** is a chemical alternative in conventional dip and pour-on applications that can effectively be introduced in ecto management programs.

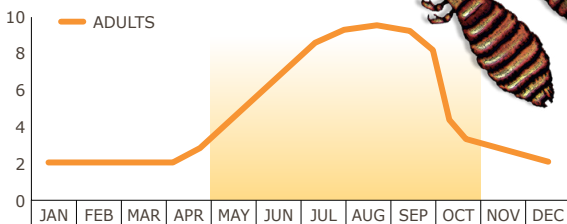
### SEASONAL OCCURRENCE OF THE BLUE TICK



### SEASONAL OCCURRENCE OF A MULTI-HOST TICK



### SEASONAL OCCURRENCE OF LICE



**FOR LICE CONTROL**  
do 2 treatments, 21 – 30 days apart

## CONTROL STRATEGY FOR INTERNAL PARASITE CONTROL

### CATTLE

#### SUCKLING ANIMALS

... at **5/6 months** of age to ensure maximum growth and weaning mass

#### AT WEANING

... to clean them from summer internal/external parasites for minimal loss of mass during winter

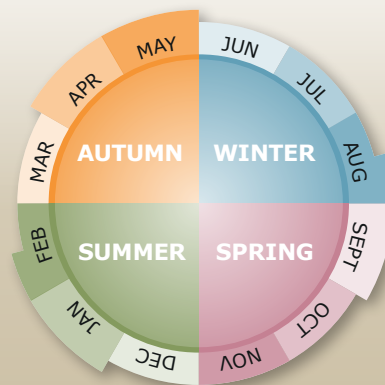
#### ADULT ANIMALS

... **at end of autumn** to clean out summer internal/external parasites; and  
... **spring/before mating** to maximize milk production (better growth of calves) and quicker regaining of condition for increased conception rate

### ANTELOPE

Due to the complexity of treating antelope, please contact your local TSA for a control strategy

Use a strategic control strategy throughout the year to limit production losses caused by Internal and External parasites



**ELIMINATE** – Abamectin 0,5 % m/v, Reg. No. G3348 (Act 36/1947)  
Namibia Reg. No. V09/18.1.2/77 (NSO), Botswana Reg. No. W130659

**Virbac (Pty) Ltd** (Reg. No. 1990/003743/07)  
Private Bag X115, Halfway House 1685, South Africa  
Tel: (012) 657-6000 Fax: (012) 657-6067  
© 03/2021 Virbac All rights reserved

[za.virbac.com](http://za.virbac.com)



Shaping the future of animal health

## Effective parasite control... FOR OPTIMUM PRODUCTION



## ELIMINATE

Transdermal pour-on with broad spectrum internal and external parasite control for cattle and antelope

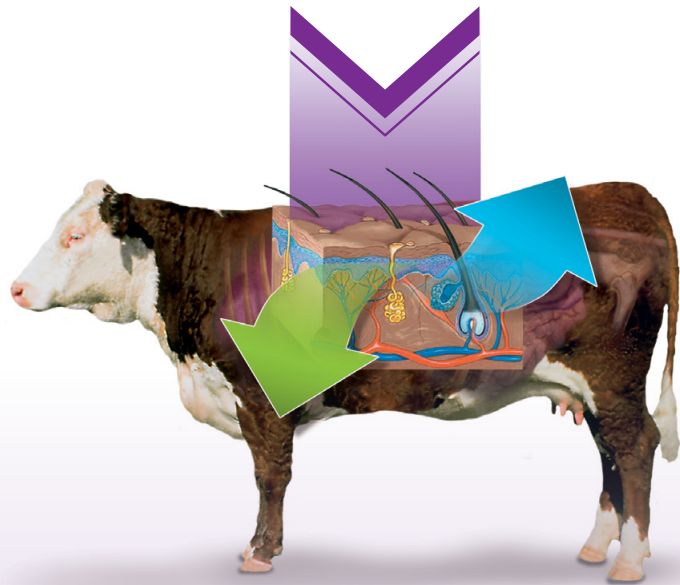
Shaping the future of animal health



# TRANSDERMAL POUR-ON WITH BROAD SPECTRUM INTERNAL AND EXTERNAL PARASITE CONTROL FOR CATTLE AND ANTELOPE

## TRANSDERMAL TECHNOLOGY

The **formulation** allows the active ingredient (abamectin) to be absorbed through the skin to deliver effective and reliable parasite control



### RAIN RESISTANT

The efficacy of ELIMINATE is not adversely affected if applied when the hide is wet, or if rain occurs shortly after application. However treatment of animals under these circumstances is not recommended.



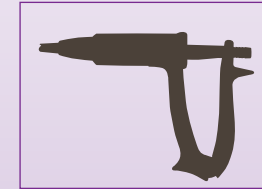
**NO NEED TO INJECT**



**ABAMECTIN**

0,5 % m/v

POUR-ON



**1 ml PER 10 kg**

## CATTLE & GAME

### INTERNAL PARASITES

	IMMATURES	ADULTS	PERSISTENCY
<b>WIREWORM</b>	✓	✓	14 DAYS
<b>BROWN STOMACHWORM*</b>	✓	✓	14 DAYS
<b>CATTLE BANKRUPTWORM</b>	✓	✓	14 DAYS
<b>HOOKWORM</b>	✓	✓	
<b>NODULAR WORM</b>	✓	✓	21 DAYS
<b>LUNG WORM</b>	✓	✓	28 DAYS
<b>EYEWORM</b>		✓	

\*including inhibited stages

**KEY** ✓ **Control** (≥ 90 % effective)  
 ✓ **Aids in control** (60 – 89 % effective)

### EXTERNAL PARASITES

Controls **BLUE TICKS**

for control of blue ticks – treatment must be repeated every 21 days

Aids in the control of **MULTI-HOST TICKS**

Kills **SUCKING** and **BITING LICE**

Controls **MANGE MITES**

Controls **HORN FLY**

(*Haematobia* sp) for up to 21 days

